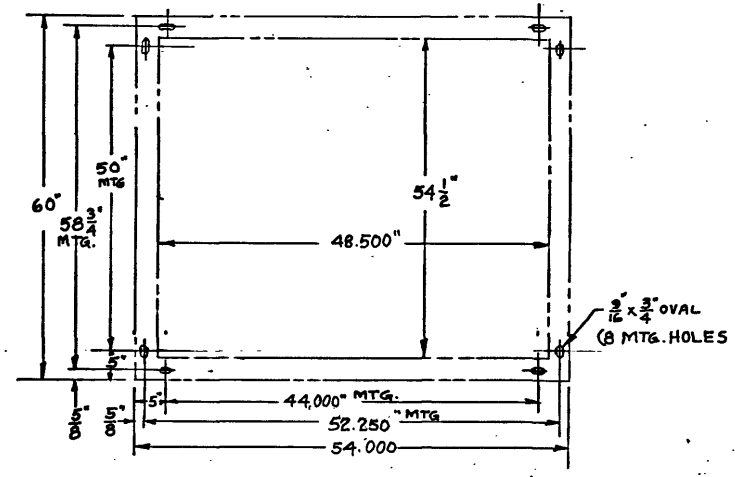
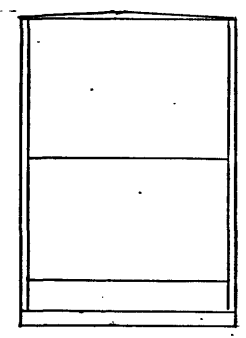


REVISIONS		
REV.	CHANGE ORDER	DATE

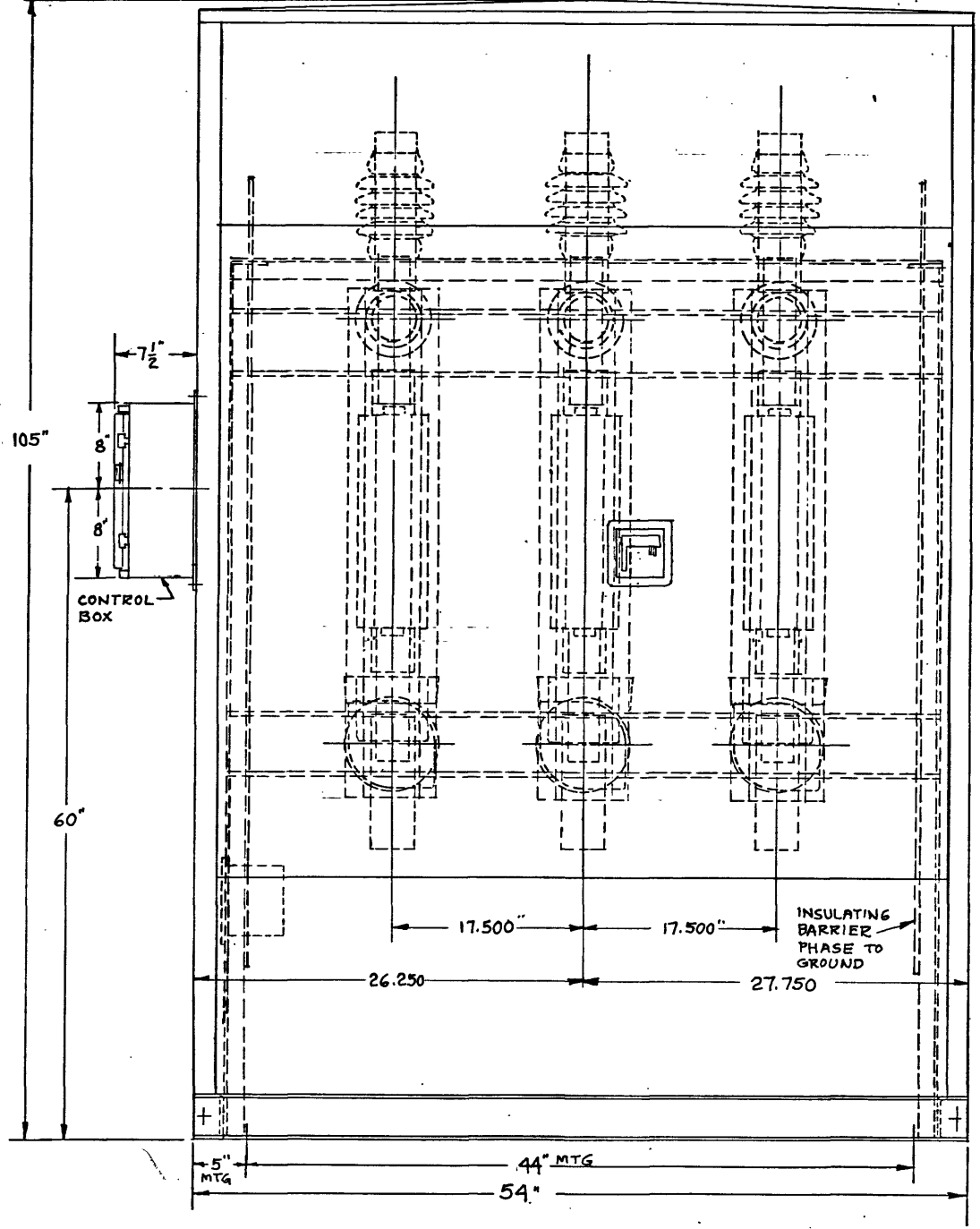
P.C. DWG. NO. D9220 0008 000
32292



PLAN VIEW SHOWING MOUNTING HOLES LOCATED IN THE WELDED STEEL CHANNEL BASE.

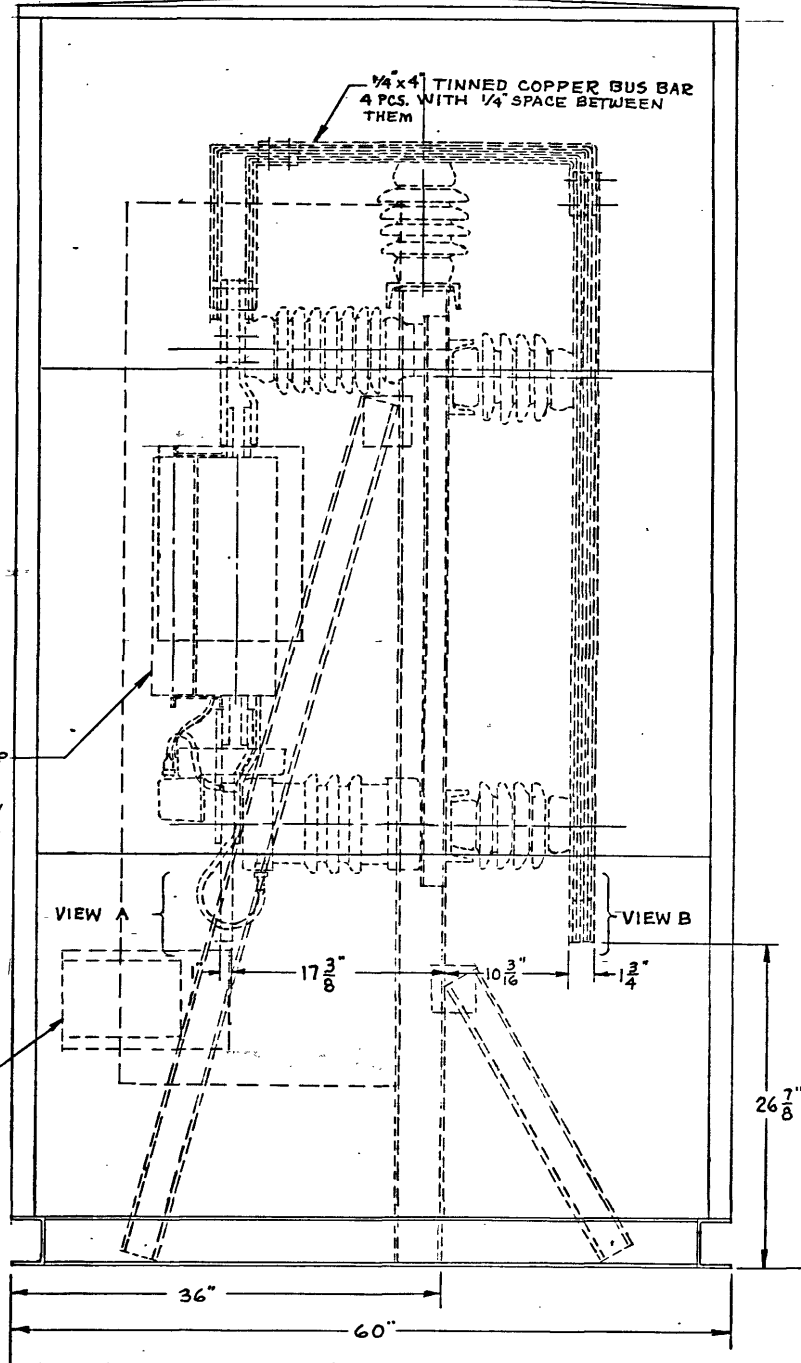


VIEW OF REAR OF ENCLOSURE SHOWING PANELS (SCALE: .03125" = 1.000")



3 PHASE 15.5KV-3000 AMP CONTINUOUS CURRENT 40 KA RMS SYM INTERRUPTING RATING 110KV BIL CURRENT LIMITING INTERRUPTER SEE G&W DRAWING D5102 0015 F02 FOR DETAILS

125 V DC - 120V AC INVERTER



NOTES:

THE ENCLOSURE IS FABRICATED FROM 12 GA. STEEL AND IS MOUNTED ON A WELDED 1/4" THICK STEEL CHANNEL BASE. IT IS BOLTED CONSTRUCTION, ASSEMBLED AT THE FACTORY. THE SIDES HAVE THREE PANELS EACH. THE FRONT HAS VENTED PANELS TOP AND BOTTOM WITH A 60" HIGH HINGED DOUBLE DOOR. THE REAR HAS A 10" HIGH VENTED PANEL ON THE BOTTOM, A 40" HIGH CENTER PANEL AND A VENTED TOP PANEL. ALL PANELS, EXCEPT THE REAR CENTER PANEL, ARE BOLTED IN PLACE WITH THE FASTENERS LOCATED ON THE INSIDE TO PREVENT TAMPERING. THE CENTER PANEL IS FASTENED FROM THE OUTSIDE WITH STAINLESS STEEL TAMPER RESISTANT SCREWS TO PERMIT REMOVAL FOR MAKING THE CABLE TERMINATIONS AT THE BOTTOM OF THE CURRENT LIMITING PROTECTOR. THESE FASTENERS REQUIRE A SPECIAL HEX WRENCH (INCLUDED WITH UNIT) FOR REMOVAL OF PANEL.

THE DOUBLE HINGED DOORS HAVE CENTER POINT LATCHING, A PENTA HEAD SECURITY BOLT, DOOR STAYS (TO HOLD DOORS IN THE OPEN POSITION), AND A RECESSED DOOR HANDLE WITH PROVISION FOR PADLOCKING. PADLOCK MUST BE REMOVED TO ACCESS THE PENTA HEAD BOLT, WHICH IN TURN MUST BE SEATED BEFORE THE PADLOCK CAN BE INSTALLED.

ALL VENTS HAVE TAMPER RESISTANT LOUVERS.

VERTICAL SUPPORTS FOR THE "CLIP" CURRENT LIMITING PROTECTORS ARE WELDED STEEL CHANNELS WITH BOLTED ALUMINUM CHANNEL HORIZONTAL MEMBERS FOR MOUNTING THE "CLIP" AND STATION POST INSULATOR BUS SUPPORTS. THE ROOF IS ONE PIECE, REMOVABLE FROM THE INSIDE ONLY WITH FOUR SLOPING PANELS FOR STIFFENING.

USER TO FURNISH CABLE LUGS AND ALL HARDWARE FOR ATTACHING THE LUGS TO THE "CLIP" AND THE BUS BARS. THE BUS BARS FOR LUG CONNECTION ARE 4" WIDE WITH SPECIAL BOLT PATTERN AS SPECIFIED BY USER. SEE AUXILIARY VIEWS.

THE ENCLOSURE AND MOUNTING STRUCTURE ARE PAINTED ASA 70 LIGHT GRAY. THE CHANNEL BASES SUPPORTING THE "CLIP" ARE GALVANIZED STEEL.

THIS DRAWING IS A TYPICAL INSTALLATION
ALL DATA GIVEN IS SUBJECT TO CHANGE WHEN ALL INFORMATION ABOUT JOB IS KNOWN
FINAL DETAILS AND DESIGN OF ENCLOSURE MAY NOT BE IDENTICAL TO THE UNIT SHOWN

FOR DETAILED DRAWING OF CLIP SEE G&W DRAWING D5107 0015 F02
SEE B SIZE DRAWING FOR B/M

TYPE "PME-CLIP" CURRENT LIMITING PROTECTOR - 15KV - 3000 AMPERE - THREE PHASE - MOUNTED IN A PAD MOUNTED STEEL ENCLOSURE WITH CABLE ENTRY FROM THE BOTTOM.		G&W G&W ELECTRIC Co.
CAT. NO. PME 3-CLIP-15.5-3000	DRAWING NO. D9220 0008 000	
DRAWN BY: <i>Hoffmann</i>	DATE: 5/19/93	REV.
APPR. BY:	SCALE: CD	SHEET 1 OF