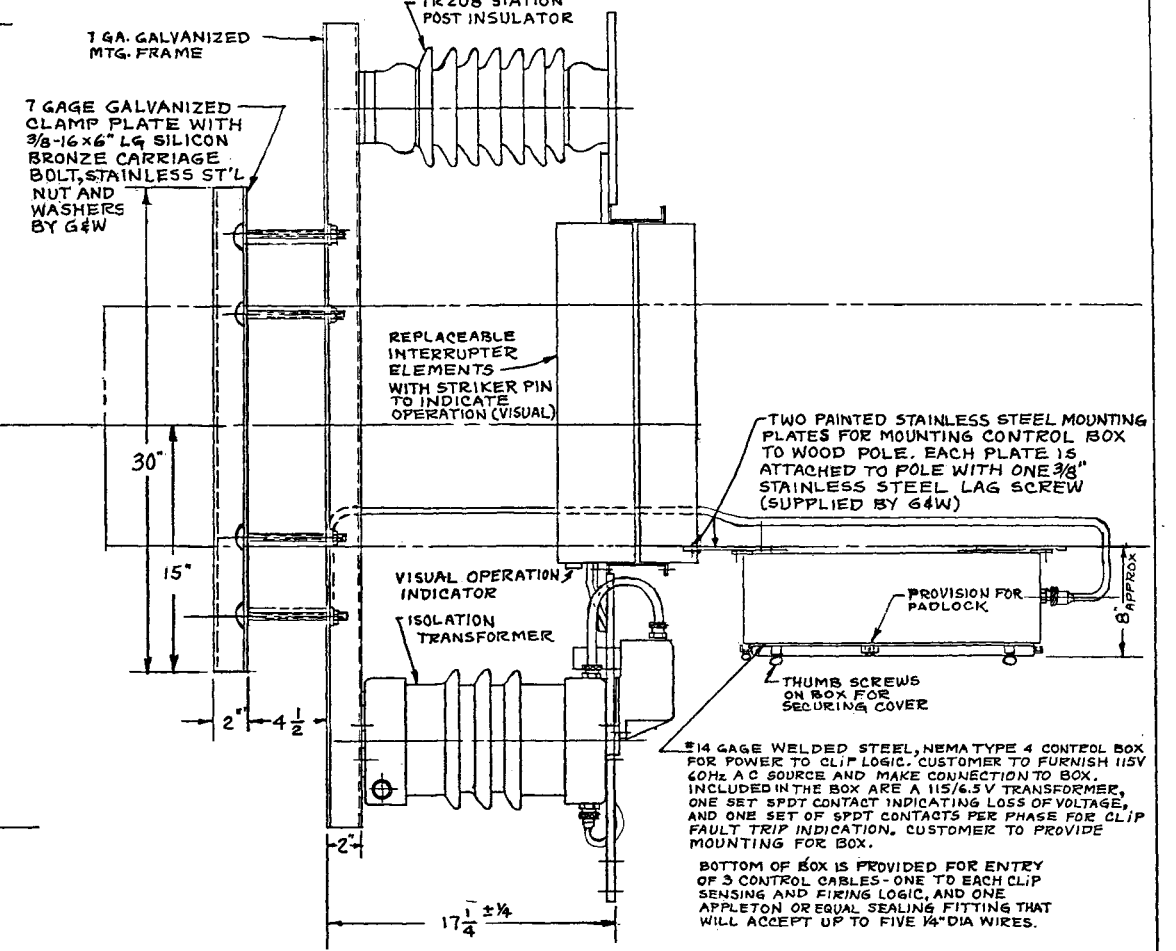
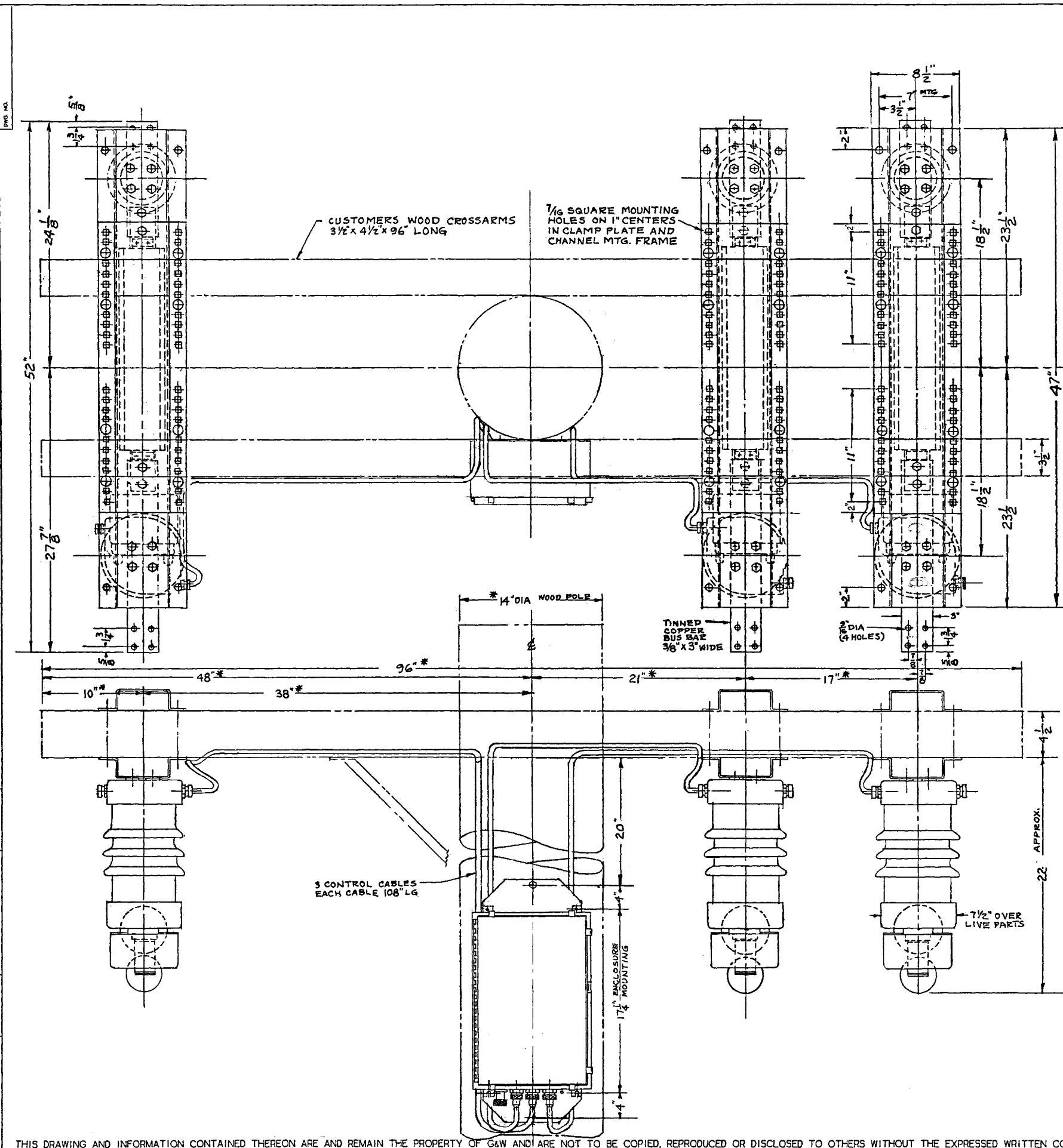


37651



* DIMENSIONS INDICATED BY AN ASTERISK ARE PER CONSOLIDATED EDISON'S DRAWING NO E0-16662-B REV 1. G&W NEITHER SUGGESTS OR RECOMMENDS THESE DIMENSIONS

PRINT IDENTIFICATION
 DATE 1/13/88 G&W NO. _____
 CUSTOMER CONSOLIDATED EDISON
 ORDER NO. _____
 FOR RECORD ITEM NO. 1
 FOR APPROVAL - NO MORE WORK TO BE DONE UNTIL APPROVAL IS RECEIVED

SEE B SIZE DWG FOR B/M		G&W G&W ELECTRIC CO.
REVISIONS	TYPE CLIP CURRENT LIMITING PROTECTOR 3 PHASE 15.5KV-1200A WITH CONTROL BOX, REMOTE LOCAL INDICATION OF OPERATION OPTION. FOR UNDERHUNG MOUNTING TO WOOD CROSS ARMS ON POLE.	
CAT. NO.	USED ON	REV.
DRAWN BY: <i>William</i>	DATE 1/13/88	D5107 0021 B00
APP. BY: JSS	DATE 1-14-88	SCALE 3/16"=1" SHEET

THIS DRAWING AND INFORMATION CONTAINED THEREON ARE AND REMAIN THE PROPERTY OF G&W AND ARE NOT TO BE COPIED, REPRODUCED OR DISCLOSED TO OTHERS WITHOUT THE EXPRESSED WRITTEN CONSENT OF G&W.